

# 國立臺北科技大學

九十三學年度車輛工程系碩士班碩士在職專班入學考試

## 甲組：車輛工程 試題

填准考證號碼

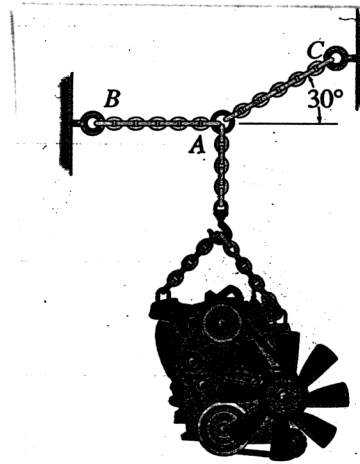
第一頁 共二頁

--	--	--	--	--	--	--

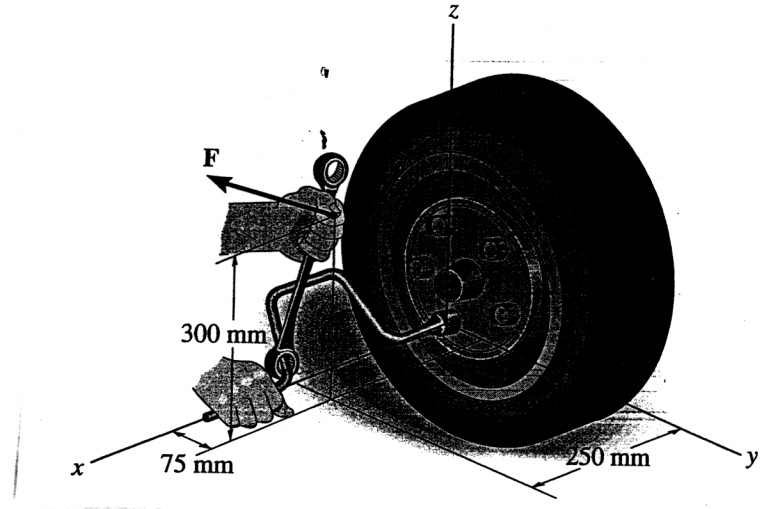
### 注意事項：

1. 本試題共 **8** 題，配分共 100 分。
2. 請按順序標明題號作答，不必抄題。
3. 全部答案均須答在試卷答案欄內，否則不予計分。

1. Determine the maximum weight of the engine that can be supported without exceeding a tension of 450 lb in chain AB and 480 lb in chain AC. (10%)



2. The lug and box wrenches are used in combination to remove the lug nut from the wheel hub. If the applied force on the end of the box wrench is  $F = \{4i - 12j + 2k\}$  N, determine the magnitude of the moment of this force about the  $x$  axis which is effective in unscrewing the lug nut. (10%)

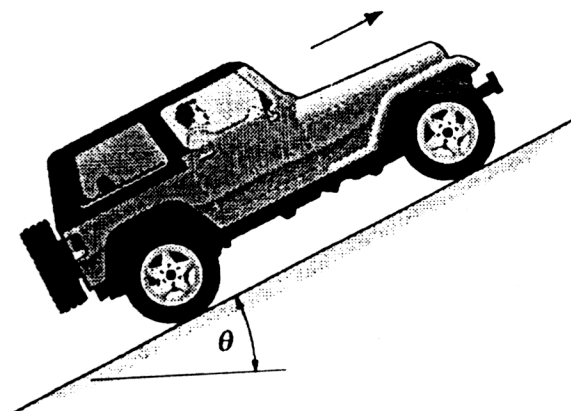


3. The sports car, having a mass of 1700 kg, is traveling horizontally along a  $20^\circ$  banked track which is circular and has a radius of curvature of  $\rho = 100\text{m}$ . If the coefficient of static friction between the tires and the road is  $\mu_s = 0.2$ , determine the maximum constant speed at which the car can travel without sliding up the slope. Neglect the size of the car. (10%)

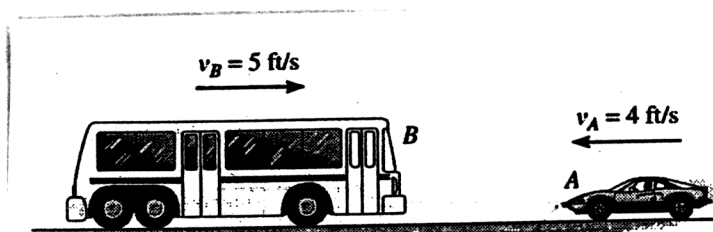


注意：背面尚有試題

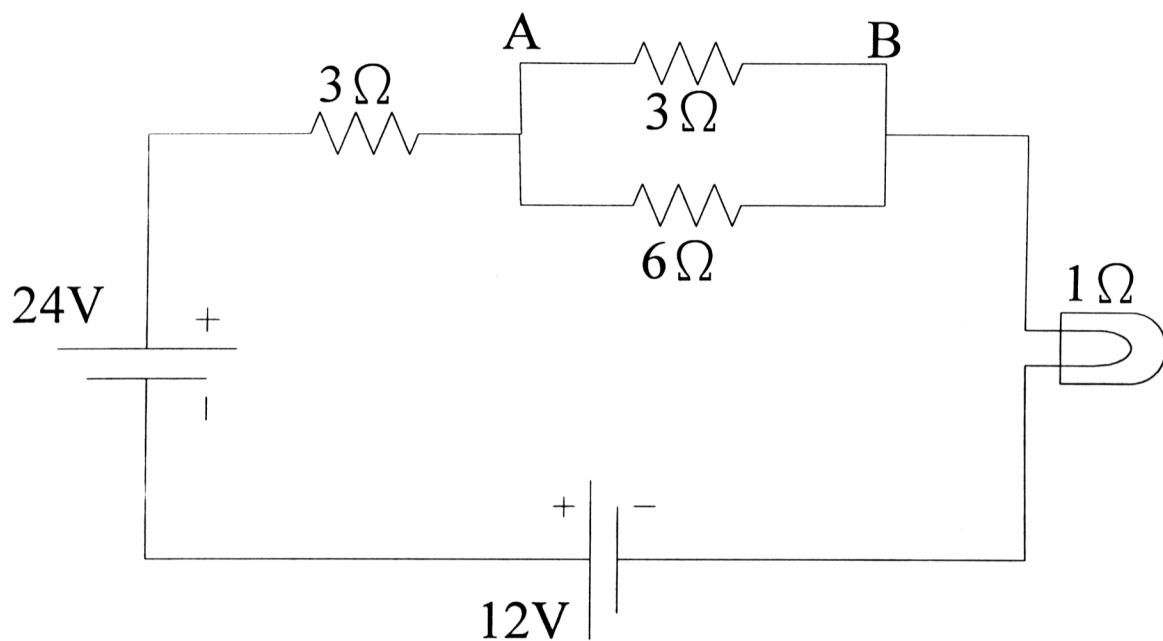
4. The jeep has a weight of 2500lb and an engine which transmits a power of 100 hp to all the wheels. Assuming the wheels do not slip on the ground, determine the angle  $\theta$  of the largest incline the jeep can climb at a constant speed  $v = 30$  ft/s. (10%)



5. The bus B has a weight of 15000 lb and is traveling to the right at 5 ft/s. Meanwhile a 3000-lb car A is traveling at 4 ft/s to the left. If the vehicles crash head-on and become entangled, determine their common velocity just after the collision. Assume that the vehicles are free to roll during collision. (10%)



6. 有一電阻電路如下，試求 AB 端的電壓值？(10%)



7. 有一 4 前進檔的車輛，其一檔減速比為 6.85:1，四檔減速比為 1:1，如欲使該車輛的減速比達到最佳化設計時，請問二及三檔的減速比應為多少最適當？(20%)

8. 請寫出下列車輛振動種類的英文專有名詞。(4 x 5%)

- 車身隨 Z 軸方向平行振動:\_\_\_\_\_。
- 車身繞 Y 軸方向旋轉振動:\_\_\_\_\_。
- 車身繞 X 軸方向旋轉振動:\_\_\_\_\_。
- 車身繞 Z 軸方向旋轉振動:\_\_\_\_\_。